

## ROOF TILES



See our assembly video instruction of MODUS, LOARA, TIGRA, FIORD and REN Rooftiles:

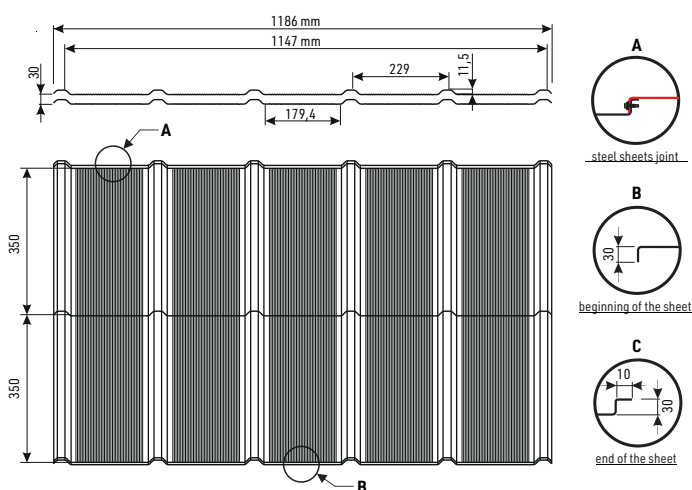


The modern panel roof tile **TIGRA** is a unique one due to its uncommon shape which is obtained due to repeated embossments. Trapezoidal separators standing between flat surfaces are the first aspects to catch the viewer's eye. Due to this, a characteristic pattern of „chocolate bars” is created on the roof. This type of placement causes perception of harmony and order of the roof. Additionally, surface of TIGRA tile is in fact 'nanowave-shaped.'

# TIGRA



effective area	0,803 m <sup>2</sup>
module length	350 mm
profile height	11,5 mm
fold height	30 mm
total width	1186 mm
effective width	1147 mm
min. roof slope	20°
coverings	coarse matt, TOPMAT, PURMAT, PURLAK, PURMAX
accessories	screws, seals, sealing collars, flashings, touch-up paint



**KREATOR  
BUDOWNICTWA  
ROKU 2022**

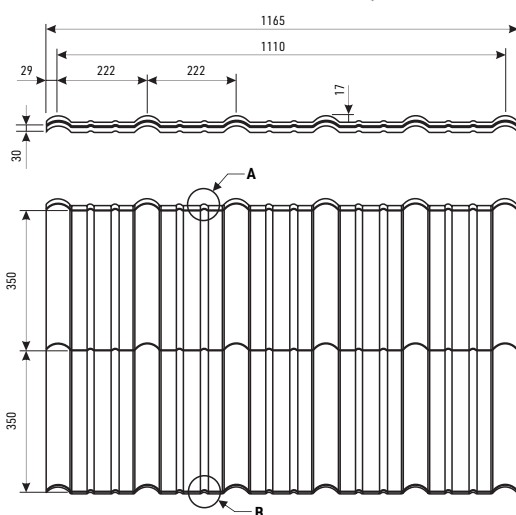


## ROOF TILES

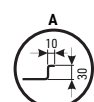


**FIORD** panel roof tile is a novelty in our company's offer. Expressive design attracts with firm embossment resembling on Scandinavian designing. The small embossings on the flat area improve stiffness of the panel which helps avoiding unaesthetic corrugation of the steel. They also facilitate communication on the roof not affecting the danger of possible deformation.

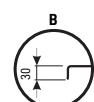
# FIORD



steel sheets joint



beginning of the sheet



end of the sheet

effective area	0,777 m <sup>2</sup>
module length	350 mm
profile height	17 mm
fold height	30 mm
total width	1165 mm
effective width	1110 mm
min. roof slope	20°
coverings	coarse matt, TOPMAT, PURMAT, PURLAK, PURMAX
accessories	screws, seals, sealing collars, flashings, touch-up paint



FIORD panel roof tile has been awarded with **TOP BUILDER 2021**



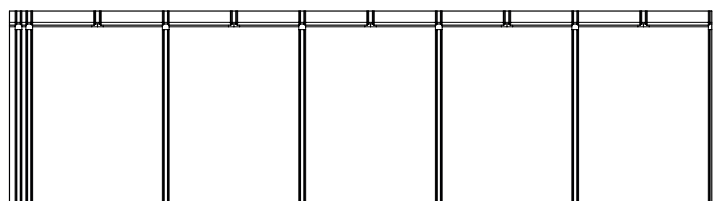
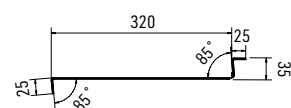
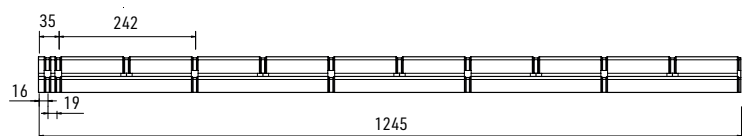
FIORD panel roof tile has been awarded with **European Medal 2021**



## ROOF TILES



The 'FLAT PLUS' steel roof tile is a response to the constantly growing minimalist trend. We have modified the 'FLAT' roof tile by removing the delicate embossing on the panel surface. As a result, we obtained a perfectly flat surface, which is now so often sought after by investors. Created with modern construction in mind, it brings an unobtrusive drawing on the roof. The best visual effect is reached in matt coatings.



effective area	0,387 m <sup>2</sup>
module length	320 mm
fold height	35 mm
total width	1245 mm
effective width	1210 mm
min. roof slope	20°
coverings	PURMAT, PURMAX
accessories	screws, seals, sealing collars, flashings, touch-up paint



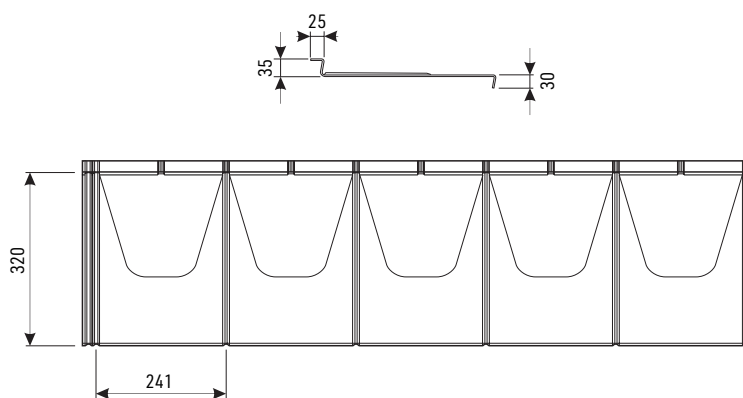
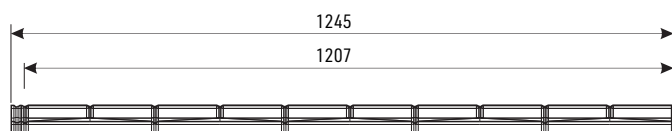
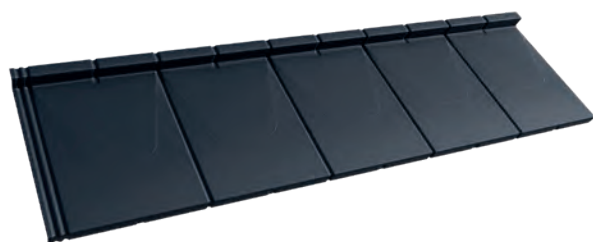
## ROOF TILES



FLAT steel roof tile is new product in Blachy Pruszyński's offer. Due to modern shape it easily sets in contemporary and industrial area. Assembly is fast and easy. Waste of material is reduced to minimum. We offer wide palette of anti-corrosion coatings in many colours. Thanks to this roofs covered with FLAT tile may be designed for many years' use.



# FLAT



effective area	0,386 m <sup>2</sup>
module length	320 mm
profile height	3 mm
fold height	35 mm
total width	1245 mm
effective width	1207mm
min. roof slope	20°
coverings	PURMAT, PURMAX
accessories	screws, seals, sealing collars, flashings, touch-up paint



FLAT steel roof tiles has been awarded with  
**GOLDEN MEDAL** at Budma International Poznań  
Fair 2019



## ROOF TILES

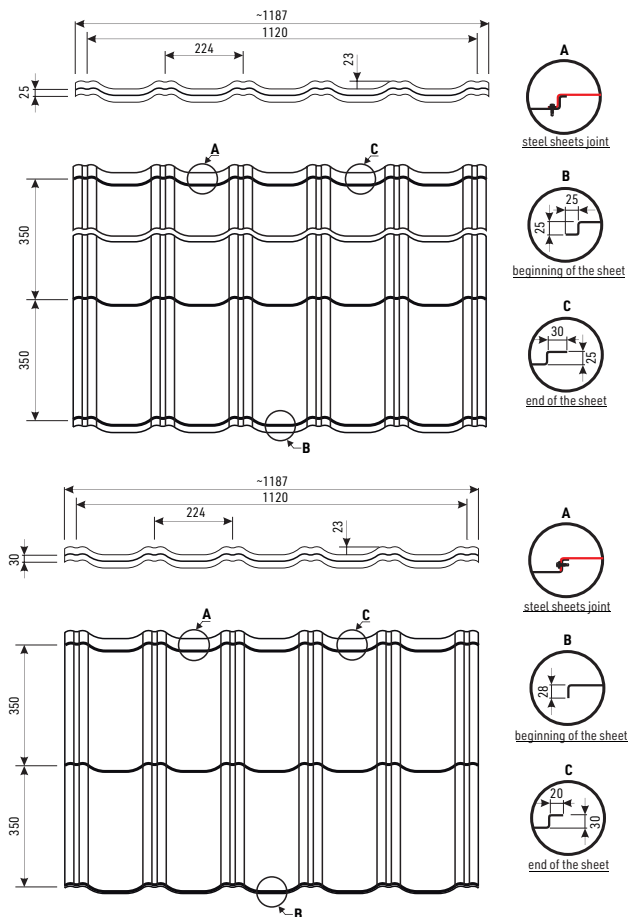


An important feature of **LOARA** roof tile which supports its popularity among customers is high embossment. LOARA's structure is symmetric which significantly simplifies its assembly. This modern profile is available both in cut-to-size and in modular option.

# LOARA



	roof tile	panel roof tile
effective area	-	0,784 m <sup>2</sup>
module length	350 mm	
profile height	23	
fold height	25 mm	30 mm
total width	1187 mm	
effective width	1120 mm	
min. roof slope	9°	15°
coverings	polyester glossy, coarse matt, PURMAT, PURLAK, PURMAX	coarse matt, TOPMAT, PURMAT, PURLAK, PURMAX
accessories	screws, seals, sealing collars, flashings, touch-up paint	

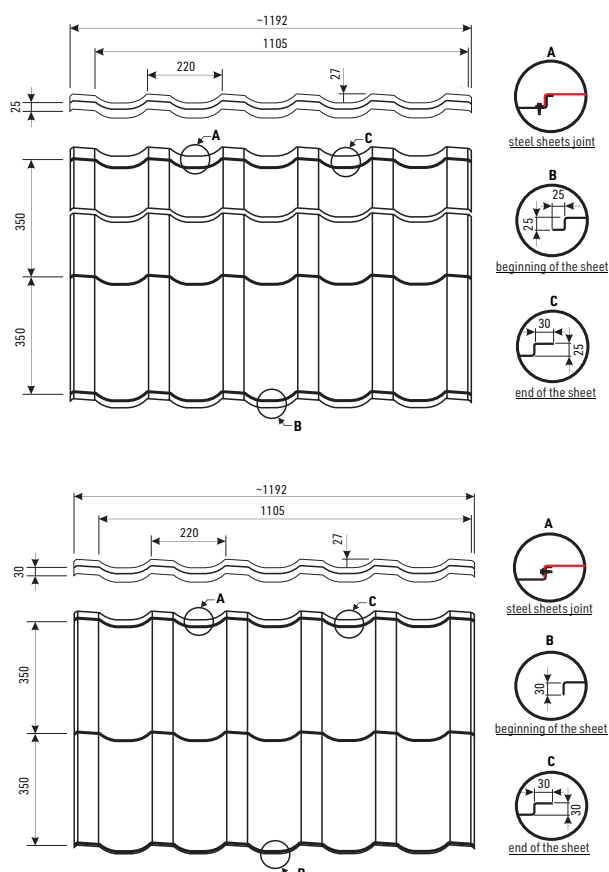


## ROOF TILES



**REN** metal roofing tile with its unique shape allows objects to stand out against others. On the other hand it seamlessly blends into the surrounding environment. It also has a very rich palette of anti-corrosion protection (organic and metallic coatings). Hence, roofs covered with „REN“ tile can be designed for decades without the risk of losing functional properties and aesthetic values.

# REN



	roof tile	panel roof tile
effective area	-	0,774 m <sup>2</sup>
module length		350 mm
profile height		27
fold height	25 mm	30 mm
total width		1192 mm
effective width		1105 mm
min. roof slope	9°	15°
coverings	polyester glossy, coarse matt, PURMAT, PURLAK, PURMAX	coarse matt, TOPMAT, PURMAT, PURLAK, PURMAX
accessories	screws, seals, sealing collars, flashings, touch-up paint	



REN steel roof tiles has been awarded with **GOLDEN MEDAL** at Budma International Poznań Fair 2018



## ROOF TILES

**KARO** panels made of covered steel are suitable for those, who appreciate original look of the roof. Panels are available in coarse matt and PURMAT coatings. However, there is a possibility to produce them in any other coating or colour from our offer. It is assembled on the roof with full boarding with use of clasp. The interesting shape of this cladding determines unique outlook of the roof. Karo panels are perfect also as chimney cladding and elevation.



dimension of panels	555x555, 345x345, 245x245 mm
steel thickness	0,5 mm
min. roof slope	22°
assembly	by means of holders, on the full-board roof
coverings	glossy polyester, coarse matt, PURMAT, PURLAK, PURMAX
accessories	clasps, sealing tapes, flashings



**KARO 555 PANEL**  
- Starting



**KARO 555 PANEL**  
pcs/m<sup>2</sup> - 3,25



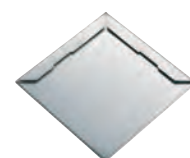
**KARO 345 PANEL**  
- Starting



**KARO 345 PANEL**  
pcs/m<sup>2</sup> - 8,4



**KARO 245 PANEL**  
- Starting



**KARO 245 PANEL**  
pcs/m<sup>2</sup> - 16,67



**CLASP**  
- fixing accessory



KARO Panels was awarded with  
Gold Medal MTP BUDMA

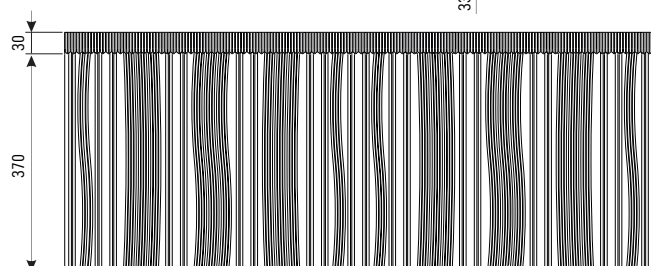
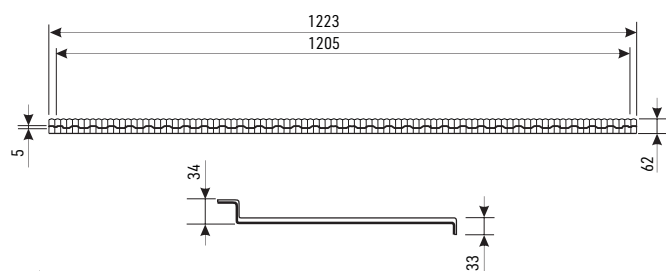


## ROOF TILES



**REGLE** is a one module roof panel – new roofing material in our offer, prepared as a response to popular trend in building – timber boarder houses, roadhouses and regional restaurants.

# REGLE



effective area	0,446 m <sup>2</sup>
module length	370 mm
profile height	5 mm
fold height	34 mm
total width	1223 mm
effective width	1205 mm
min. roof slope	20°
coverings	PURMAX, PURLAK, PURMAT
accessories	screws, seals, sealing collars, flashings, touch-up paint

REGLE Roof panel  
has been awarded with TOP BUILDER 2015  
Award and Gold Medal of MTP BUDMA 2015





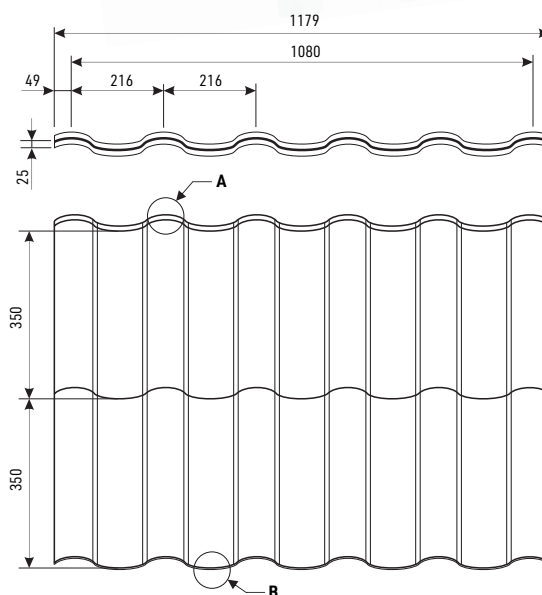


**MODUS** is a metal roofing tile delivered as panels for traditional assembly with use of screws. Available coatings are: glossy and coarse-grained matt polyester, polyurethane - PURMAT and PURLAK, also hybrid coating - PURMAX.

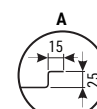
## MODUS



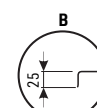
effective area	0,756 m <sup>2</sup>
module length	350 mm
profile height	35 mm
fold height	25 mm
total width	~1179 mm
effective width	1080 mm
min. roof slope	15°
coverings	coarse matt, TOPMAT, PURLAK, PURMAT, PURMAX
accessories	screws, seals, sealing collars, flashings, touch-up paint



steel sheets joint



beginning of the sheet



end of the sheet



MODUS roof tile  
has been awarded with  
European Medal  
XXIV Edition

2014  
budowniczo



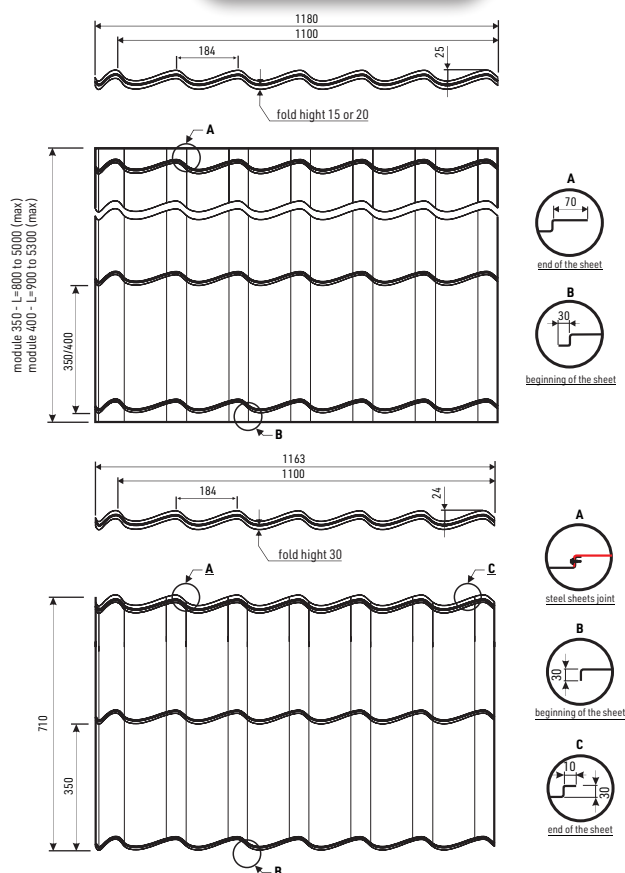
## ROOF TILES



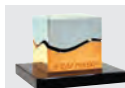
Wide range of colours allows matching the roof with elevation and surroundings. Due to defined length of sheets, the quantity of wasted material is cut down to minimum. Blachy Pruszyński steel tiles are covered with warranty period up to 50 years (depending on the type of coating).

**Now SZAFIR roof tile is available also in modular mode !**

# SZAFIR



	roof tile	panel roof tile
effective area	-	0,77 m <sup>2</sup>
module length		350 mm
profile height		25
fold height	15 lub 20mm	30 mm
total width	1180 mm	1163 mm
effective width	1100 mm	1100 mm
min. roof slope	9°	15°
coverings	polyester glossy, coarse matt, PURMAT, PURLAK, PURMAX	coarse matt, TOPMAT, PURMAT, PURLAK, PURMAX
accessories	screws, seals, sealing collars, flashings, touch-up paint	



SZAFIR steel roofing tiles have been awarded with the 13th edition of **Teraz Polska (Now Poland)** Polish Promotional Emblem





## COLORS

### POLYESTER COVERINGS

#### glossy PS 25 µm

RAL 9010 <sup>(1) (2) (3)</sup>	RAL 9002 <sup>(1) (2)</sup>	RAL 7035 <sup>(1) (2)</sup>	RAL 9006 <sup>(1) (2) (3)</sup>	RAL 9007 <sup>(1) (2)</sup>	RAL 7000 <sup>(1)</sup>
SNOWY WHITE	WHITE	GREY	SILVER	SILVER METALLIC	GREY
RAL 7024 <sup>(1)</sup>	RAL 7016 <sup>(1) (2)</sup>	RAL 5010 <sup>(1) (2)</sup>	RAL 6029 <sup>(1) (2)</sup>	RAL 6005 <sup>(1)</sup>	RAL 1021 <sup>(1)</sup>
GRAPHITE	ANTHRACITE	BLUE	GREEN	DARK GREEN	YELLOW
RAL 1002 <sup>(1) (2)</sup>	RAL 8023 <sup>(1)</sup>	RAL 8004 <sup>(1)</sup>	RAL 3016 <sup>(1) (2)</sup>	RAL 3005 <sup>(1)</sup>	RR 028 <sup>(1)</sup>
SAND	COPPER	BRICK	CORAL	DARK CHERRY	CHERRY
RAL 3011 <sup>(2)</sup>	RAL 8017 <sup>(1) (2)</sup>	RR 032 <sup>(1)</sup>	RAL 9005 <sup>(1)</sup>		RAL 1015 <sup>(1)</sup>
LIGHT CHERRY	BROWN	DARK BROWN	BLACK	GOLDEN OAK	CREAM - BEIGE

**10/30** Guarantee\*  
for years

The 25 µm layer of polyester varnish is an efficient protection against the destructive impact of UV radiation. The coating protects the steel against corrosion and ensures colour durability for years. Products with glossy polyester (PS) coating are granted even 30-year warranty.

#### PMG 35 µm coarse matt

RR 011 <sup>(1)</sup>	RR 750 <sup>(1)</sup>	RR 028 <sup>(1)</sup>	RR 032 <sup>(1)</sup>	RAL 8017 <sup>(1)</sup>	RAL 7016 <sup>(1)</sup>
GREEN	BRICK	CHERRY	DARK BROWN	BROWN	ANTHRACITE
RR 033 <sup>(1)</sup>					
BLACK	DARK WALNUT				

**15/35** Guarantee\*  
for years

The coarse-grained PMG polyester coating is 35 µm of efficient protection against external factors. Used primarily for cut-to-size steel roof tiles, it creates a modern, matt finish for the building.

#### TOPMAT

RR 750 <sup>(1)</sup>	RAL 8017 <sup>(1)</sup>	RAL 7016 <sup>(1)</sup>	RR 033 <sup>(1)</sup>
BRICK	BROWN	ANTHRACITE	BLACK

**20/35** Guarantee\*  
for years

TOPMAT® is a 35 µm thick matt polyester surface. It has 20% higher resistance to discoloration and higher corrosion resistance than glossy polyester coating. It's designed for panel roof tiles.

### HYBRID COATINGS

#### PURMAX

POWŁOKA HYBRYDOWA

RAL 8004 <sup>(1)</sup>	RAL 8017 <sup>(1)</sup>	RAL 9005 <sup>(1)</sup>	RAL 7016 <sup>(1)</sup>
BRICK	BROWN	BLACK	ANTHRACITE

**20/40** Guarantee\*  
for years

This coating is a combination of 25 µm polyester and 15 µm thick polyurethane. It is characterized by a very high resistance to mechanical damage thanks to innovative methods of hardening varnishes with the use of UV radiation.

### POLYURETHANE COVERINGS

#### PURLAK

RAL 8004 <sup>(1)</sup>	RR 028 <sup>(1)</sup>	RAL 8017 <sup>(1)</sup>	RR 750 <sup>(1)</sup>	RR 011 <sup>(1)</sup>	RR 028 <sup>(1)</sup>
BRICK	CHERRY	BROWN	BRICK	GREEN	CHERRY
RAL 9005 <sup>(1)</sup>	RAL 7016 <sup>(1)</sup>		RAL 8017 <sup>(1)</sup>	RR 033 <sup>(1)</sup>	RAL 7016 <sup>(1)</sup>
BLACK	ANTHRACITE		BROWN	BLACK	ANTHRACITE

**30/50** Guarantee\*  
for years

The polyurethane coverings PURLAK (gloss) and PURMAT (matt) are a 50-micron layer which effectively protects the cover against the harmful effects of sunlight. The risk of corrosion has been minimized, so that the coating can be used even in areas with a high degree of environmental aggressiveness.

(1) steel sheet thickness 0.5 mm, (2) steel sheet thickness 0.7 mm, (3) steel sheet thickness 1.0 mm,

Actual colours may vary from displayed or printed images. The shades of the coatings may vary depending on the steel coil from the product is made of.

If the customer requires a specific shade of coating color, please inform the sales person when placing the order.

\*The length of the guarantee depends on the type of guarantee (aesthetic or technical). Check the conditions on the website [pruszynski.com.pl](http://pruszynski.com.pl) or ask at the point of sale.