

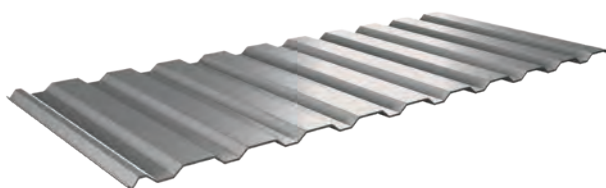
# TRAPEZOIDAL PROFILES

## ATTENTION:

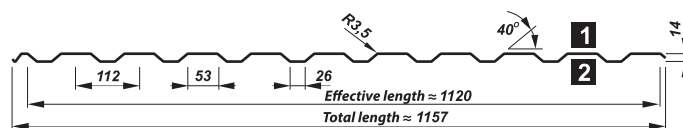
- 1 trapezoidal sheet is coated with decorative coating,
- 2 trapezoidal sheet is coated with protective coating (primer)

## ROOFING PROFILES

### T 14 roof

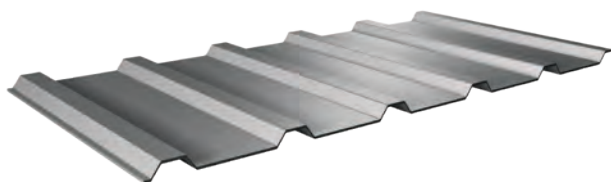


≠0,50 length max 6 lm ≠0,70 length max 7 lm

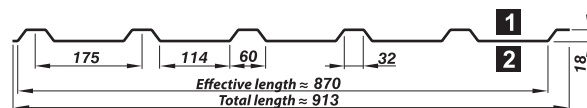


COATING:					STEEL SHEET THICKNESS:
polyester	hybrid	polyurethane	zinc	aluzinc	od 0,50 mm to 0,70 mm
glossy					
25 µm	40 µm	50 µm	200, 275 g/m <sup>2</sup>	150, 185 g/m <sup>2</sup>	

### T 18 galvanised roof

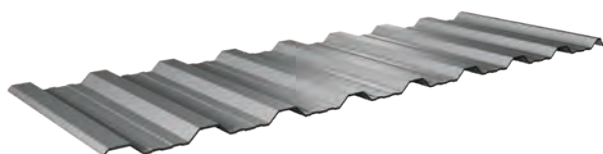


≠0,50 length max 7 lm ≥0,60 length max 8 lm

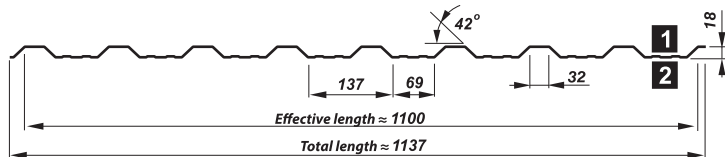


COATING:	STEEL SHEET THICKNESS
zinc	od 0,50 mm to 0,80 mm
200, 275 g/m <sup>2</sup>	

### T 18 DR roof

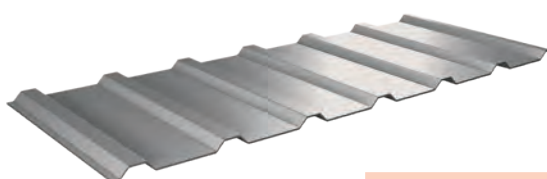


≠0,50 to 0,80 length max 9 lm

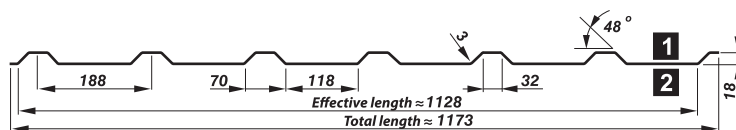


COATING:					STEEL SHEET THICKNESS
polyester	hybrid	polyurethane	zinc	aluzinc	0,50 mm to 0,80 mm
glossy					
25 µm	40 µm	50 µm	200, 275 g/m <sup>2</sup>	150, 185 g/m <sup>2</sup>	

### T 18 roof



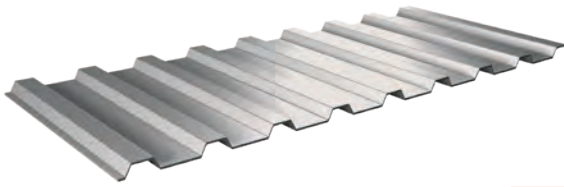
≠0,50 to 0,80 length max 9 lm



COATING					STEEL SHEET THICKNESS
polyester	hybrid	polyurethane	zinc	aluzinc	0,50 mm to 0,80 mm
glossy					
25 µm	40 µm	50 µm	200, 275 g/m <sup>2</sup>	150, 185 g/m <sup>2</sup>	

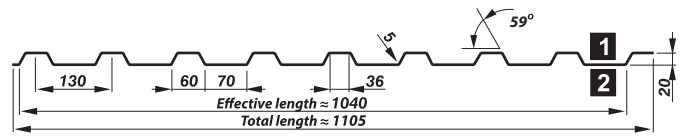
# TRAPEZOIDAL PROFILES

## T 20 roof



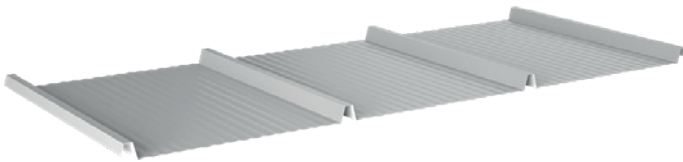
±0,50 to 0,75

length max 9 lm



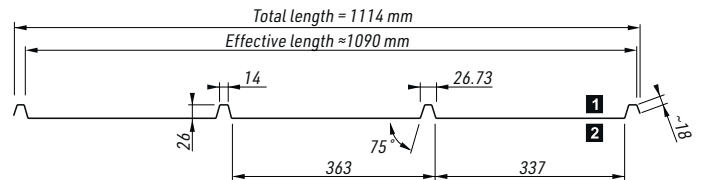
COATING:					STEEL SHEET THICKNESS
polyester		hybrid	polyurethane	aluzinc	0,50 mm to 0,75 mm
glossy	matt				
25 µm	35 µm	40 µm	50 µm	150, 185 g/m <sup>2</sup>	

## T 26 SUPER



±0,50 to 0,75

length max 9 lm



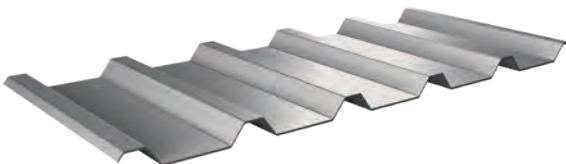
### TYPE OF PROFILES:

- F - micro-wave
- T - micro-trapezoidal



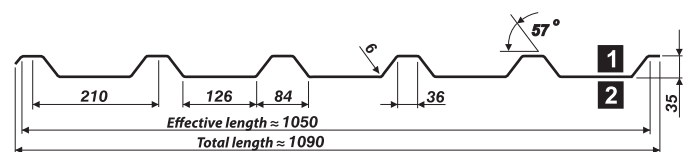
COATING:					STEEL SHEET THICKNESS
polyester		hybrid	polyurethane	zinc	0,50 mm to 0,75 mm
glossy	matt				
25 µm	35 µm	40 µm	50 µm	200, 275 g/m <sup>2</sup>	
				aluzinc	150, 185 g/m <sup>2</sup>

## T 35 roof



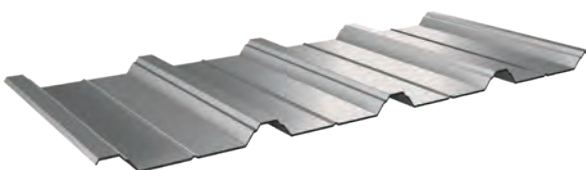
±0,50 length max 9 lm

≥ 0,70 length max 12 lm

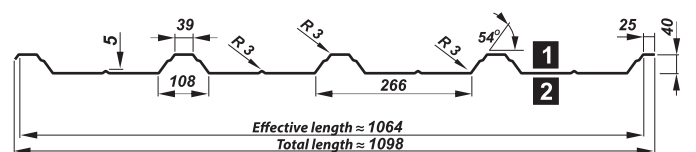


COATING:					STEEL SHEET THICKNESS
polyester		hybrid	polyurethane	zinc	od 0,50 mm to 1,00 mm
glossy	matt				
25 µm	35 µm	40 µm	50 µm	200, 275 g/m <sup>2</sup>	
				aluzinc	150, 185 g/m <sup>2</sup>

## T 40 roof



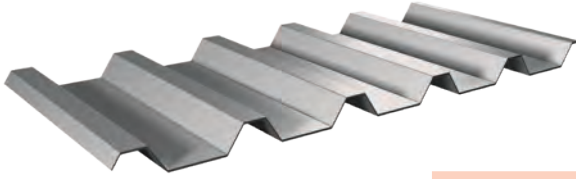
±0,50 length max 9 lm ≥ 0,70 length max 12 lm



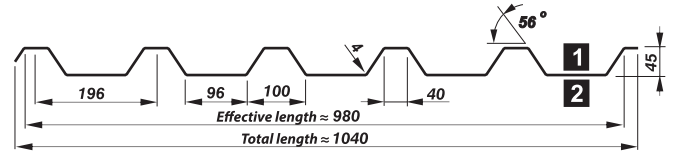
COATING:					STEEL SHEET THICKNESS
polyester		hybrid	polyurethane	zinc	0,50 mm to 1,0 mm
glossy	matt				
25 µm	35 µm	40 µm	50 µm	200, 275 g/m <sup>2</sup>	
				aluzinc	150, 185 g/m <sup>2</sup>

# TRAPEZOIDAL PROFILES

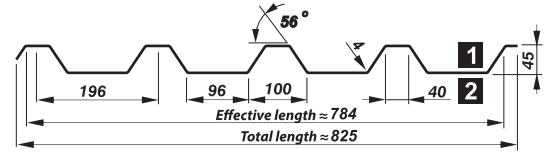
## T 45 roof



≠0,50 length max 9 lm ≥ 0,70 length max 12 lm



COATING:					STEEL SHEET THICKNESS
polyester	hybrid	polyurethane	zinc	aluzinc	0,50 mm to 1,00 mm
glossy 25 µm	matt 35 µm	40 µm	50 µm	200, 275 g/m <sup>2</sup> 150, 185 g/m <sup>2</sup>	



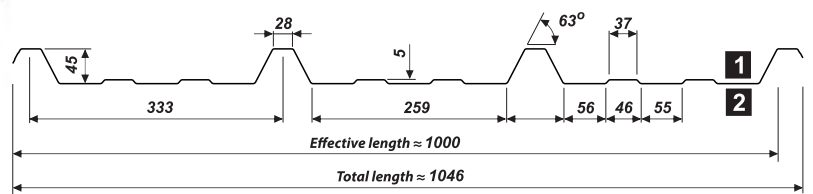
COATING:	STEEL SHEET THICKNESS
zinc 200, 275 g/m <sup>2</sup>	0,50 mm to 1,00 mm

## T 45P roof



≠0,50 length max 10 lm

≠ 0,70 length max 12 lm



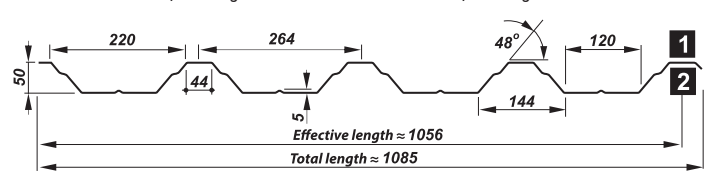
COATING:					STEEL SHEET THICKNESS
polyester	hybrid	polyurethane	zinc	aluzinc	0,50 mm to 0,70 mm
glossy 25 µm	matt 35 µm	40 µm	50 µm	200, 275 g/m <sup>2</sup> 150, 185 g/m <sup>2</sup>	

## T 50P roof



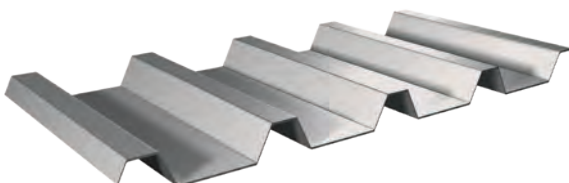
≠0,50 length max 10 lm

≥ 0,70 length max 12 lm

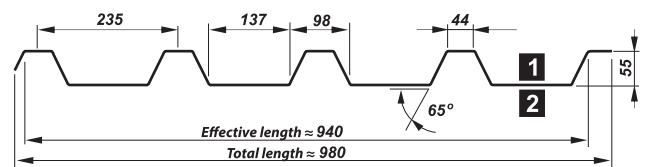


COATING:					STEEL SHEET THICKNESS
polyester	hybrid	polyurethane	zinc	aluzinc	0,50 mm to 1,25 mm
glossy 25 µm	matt 35 µm	40 µm	50 µm	200, 275 g/m <sup>2</sup> 150, 185 g/m <sup>2</sup>	

## T 55P roof



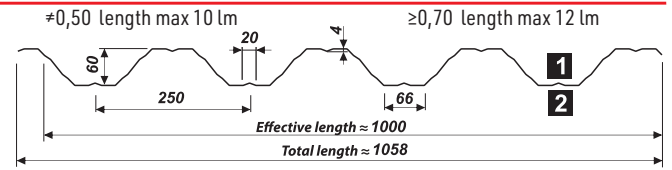
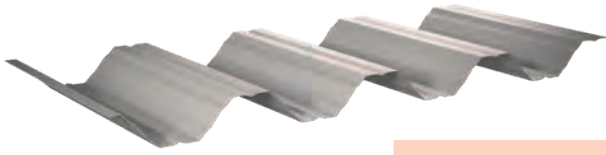
≠0,70 to 1,25 length max 12 lm



COATING:					STEEL SHEET THICKNESS
polyester	hybrid	polyurethane	zinc	aluzinc	0,70 mm to 1,25 mm
glossy 25 µm	matt 35 µm	40 µm	50 µm	200, 275 g/m <sup>2</sup> 150, 185 g/m <sup>2</sup>	

# TRAPEZOIDAL PROFILES

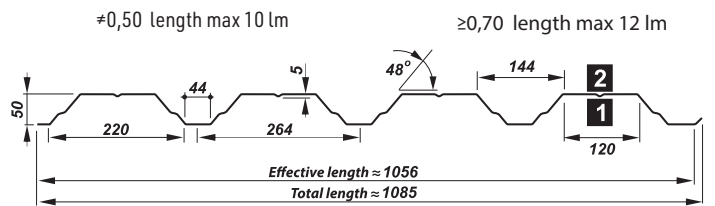
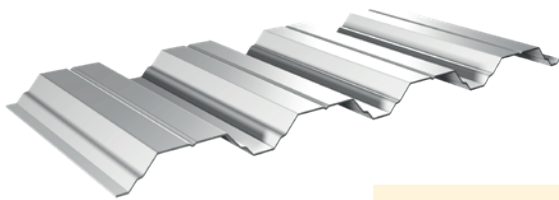
## T 60P roof



COATING:						STEEL SHEET THICKNESS
polyester		hybrid	polyurethane	zinc	aluzinc	0,50 mm to 1,25 mm
glossy	matt	40 $\mu$ m	50 $\mu$ m	200, 275 g/m <sup>2</sup>	150, 185 g/m <sup>2</sup>	
25 $\mu$ m	35 $\mu$ m					

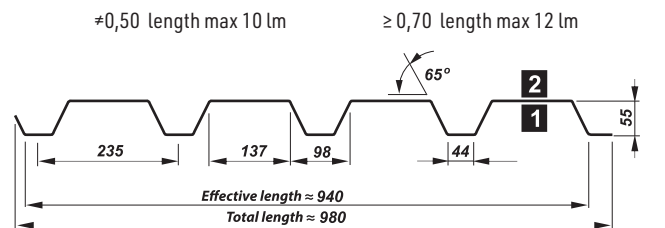
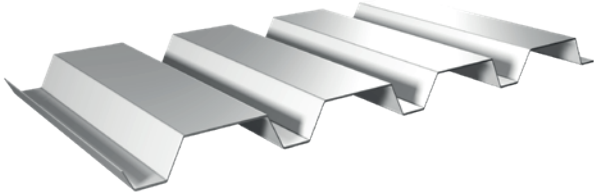
## CONSTRUCTION PROFILES

### T 50P



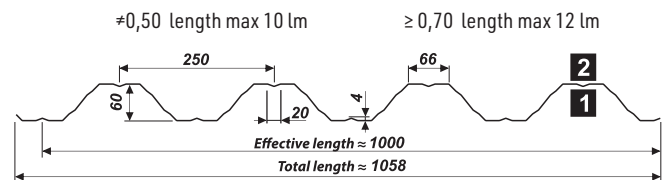
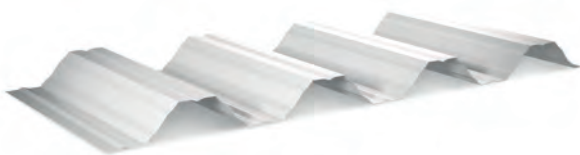
COATING						STEEL SHEET THICKNESS
polyester		hybrid	polyurethane	zinc	aluzinc	0,50 mm to 1,25 mm
glossy	matt	40 $\mu$ m	50 $\mu$ m	200, 275 g/m <sup>2</sup>	150, 185 g/m <sup>2</sup>	
25 $\mu$ m	35 $\mu$ m					

### T 55P



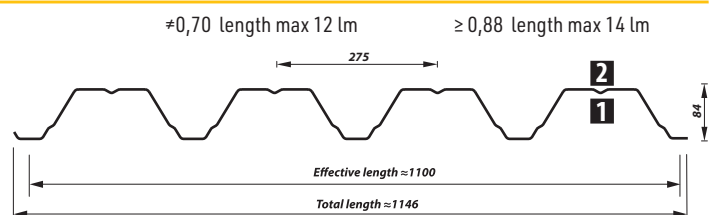
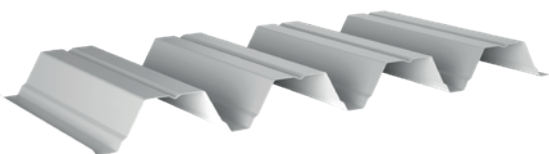
COATING						STEEL SHEET THICKNESS
polyester		hybrid	polyurethane	zinc	aluzinc	0,50 mm to 1,25 mm
glossy	matt	40 $\mu$ m	50 $\mu$ m	200, 275 g/m <sup>2</sup>	150, 185 g/m <sup>2</sup>	
25 $\mu$ m	35 $\mu$ m					

### T 60P



COATING						STEEL SHEET THICKNESS
polyester		hybrid	polyurethane	zinc	aluzinc	0,50 mm to 1,25 mm
glossy	matt	40 $\mu$ m	50 $\mu$ m	200, 275 g/m <sup>2</sup>	150, 185 g/m <sup>2</sup>	
25 $\mu$ m	35 $\mu$ m					

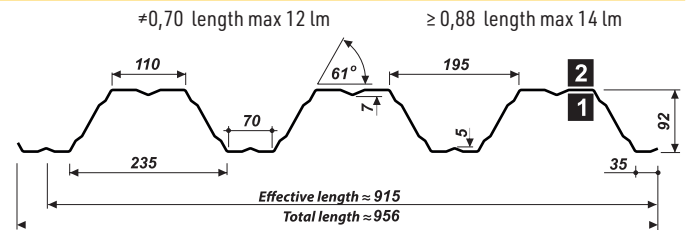
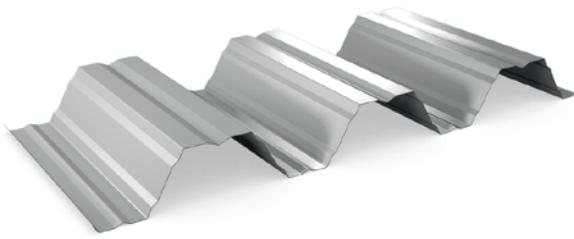
### T 84



COATING		STEEL SHEET THICKNESS
polyester glossy	zinc	0,70 mm to 1,25 mm
15 and 25 $\mu$ m	200, 275 g/m <sup>2</sup>	

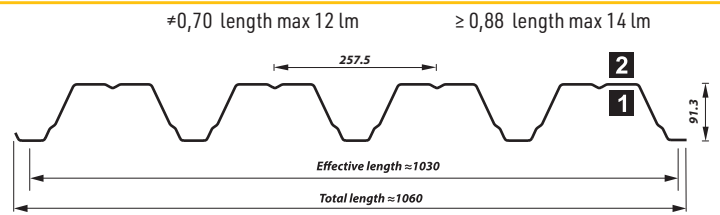
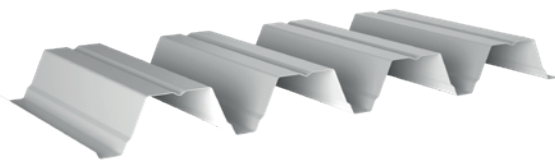
# TRAPEZOIDAL PROFILES

T 92P



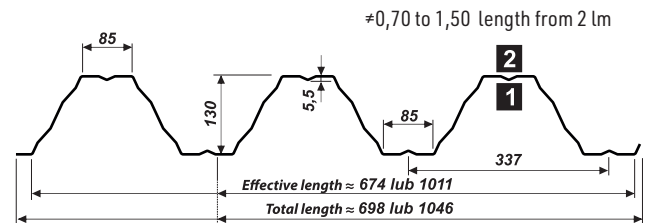
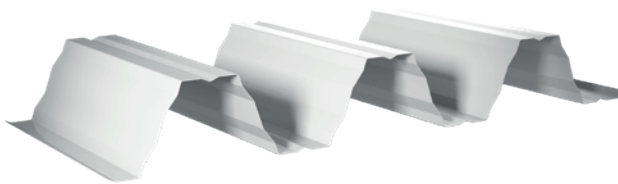
COATING		STEEL SHEET THICKNESS
polyester glossy 15 and 25 µm	zinc 200, 275 g/m <sup>2</sup>	0,70 mm to 1,25 mm

T 94



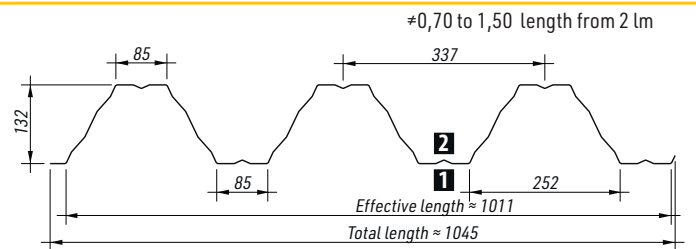
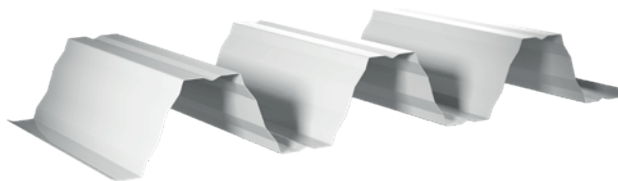
COATING		STEEL SHEET THICKNESS
polyester glossy 15 and 25 µm	zinc 200, 275 g/m <sup>2</sup>	0,70 mm to 1,50 mm

T 130



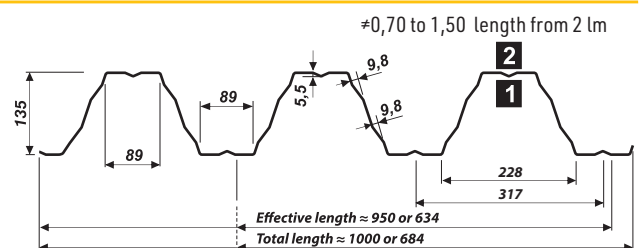
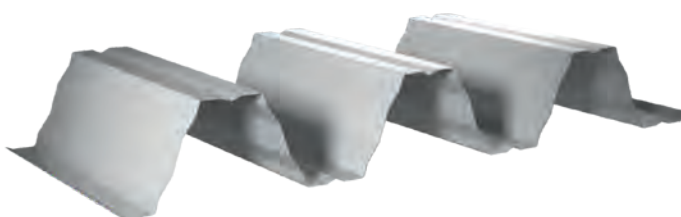
COATING			STEEL SHEET THICKNESS
polyester glossy 15 and 25 µm	zinc 200, 275 g/m <sup>2</sup>	aluzinc 150, 185 g/m <sup>2</sup>	0,70 mm to 1,50 mm

T 133



COATING			STEEL SHEET THICKNESS
polyester glossy 15 and 25 µm	zinc 200, 275 g/m <sup>2</sup>	aluzinc 150, 185 g/m <sup>2</sup>	0,70 mm to 1,50 mm

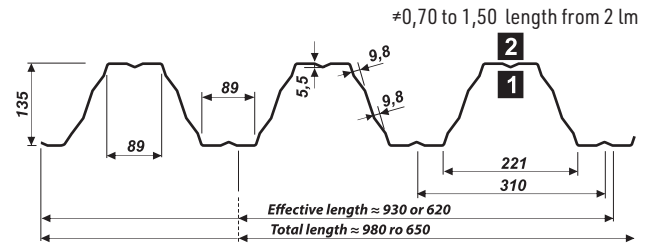
T 135



COATING		STEEL SHEET THICKNESS
polyester glossy 15 and 25 µm	zinc 200, 275 g/m <sup>2</sup>	0,70 mm to 1,50 mm

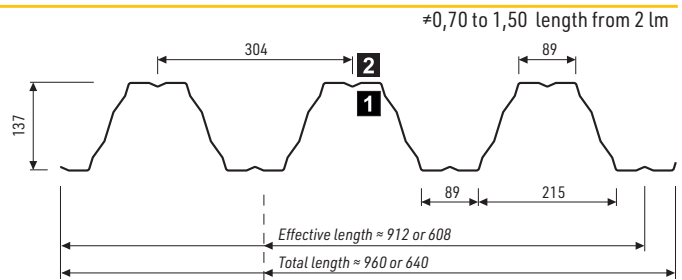
# TRAPEZOIDAL PROFILES

T 135P



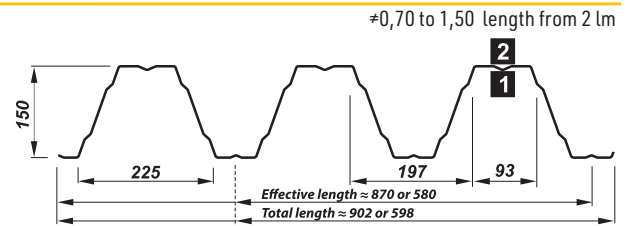
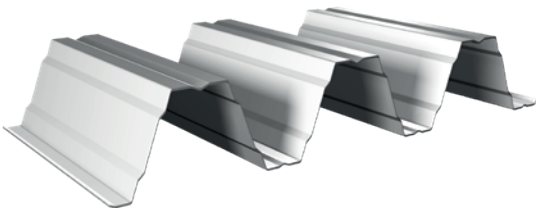
COATING		STEEL SHEET THICKNESS
polyester glossy 15 and 25 µm	zinc 200, 275 g/m <sup>2</sup>	0,70 mm to 1,50 mm

T 140



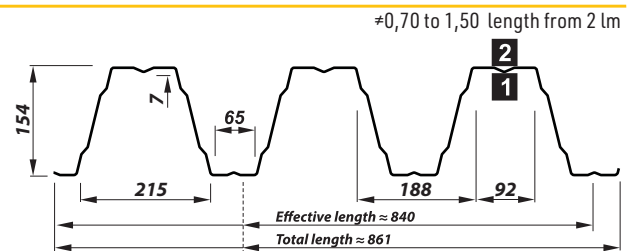
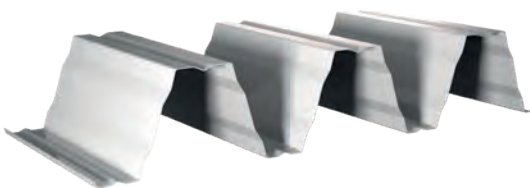
COATING		STEEL SHEET THICKNESS
polyester glossy 15 and 25 µm	zinc 200, 275 g/m <sup>2</sup>	0,70 mm to 1,50 mm

T 150



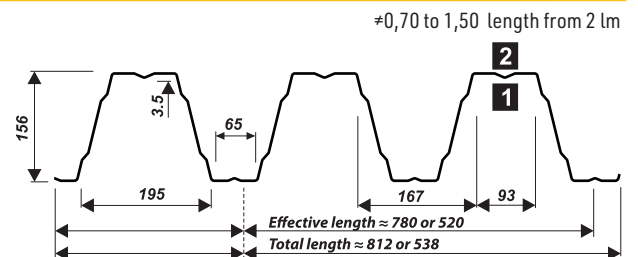
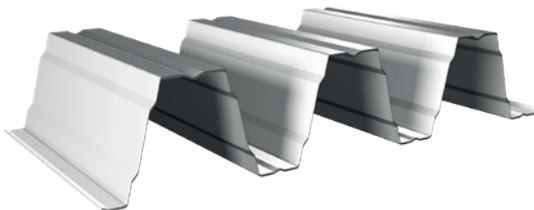
COATING		STEEL SHEET THICKNESS
polyester glossy 15 and 25 µm	zinc 200, 275 g/m <sup>2</sup>	0,70 mm to 1,50 mm

T 155



COATING		STEEL SHEET THICKNESS
polyester glossy 15 and 25 µm	zinc 200, 275 g/m <sup>2</sup>	0,70 mm to 1,50 mm

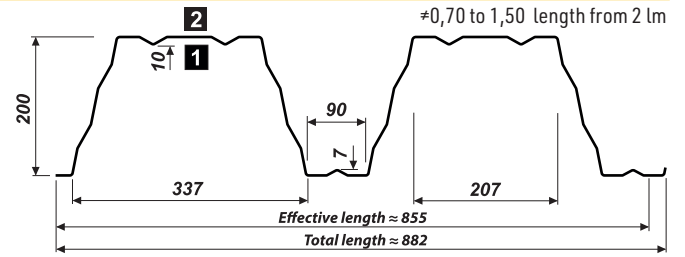
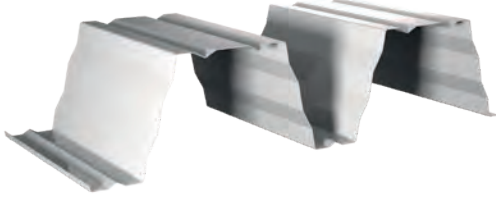
T 160



COATING		STEEL SHEET THICKNESS
polyester glossy 15 and 25 µm	zinc 200, 275 g/m <sup>2</sup>	0,70 mm to 1,50 mm

# TRAPEZOIDAL PROFILES

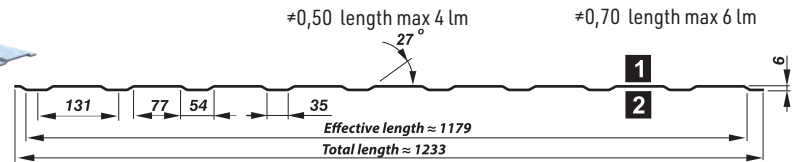
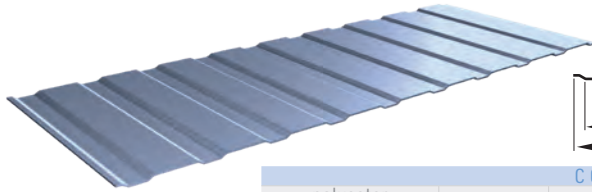
## T 200



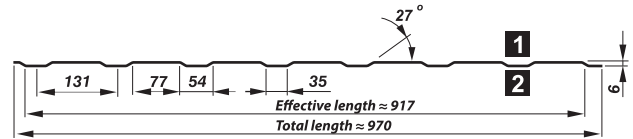
COATING		STEEL SHEET THICKNESS
polyester glossy	zinc	0,70 mm to 1,50 mm
15 and 25 $\mu\text{m}$	200, 275 $\text{g/m}^2$	

## ELEVATION PROFILES

### T 6 elevation

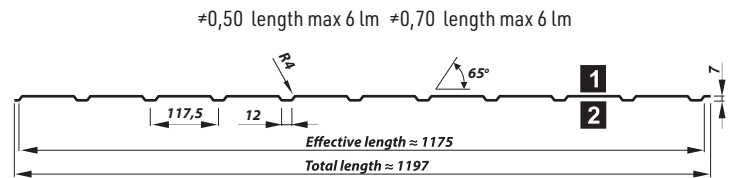
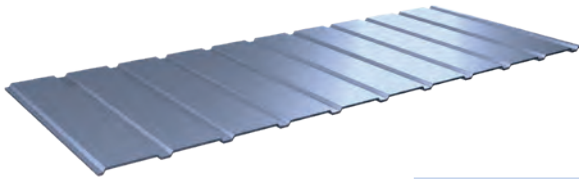


COATING					STEEL SHEET THICKNESS
polyester	hybrid	polyurethane	zinc	aluzinc	0,50 mm to 0,70 mm
glossy					
25 $\mu\text{m}$	40 $\mu\text{m}$	50 $\mu\text{m}$	200, 275 $\text{g/m}^2$	150, 185 $\text{g/m}^2$	



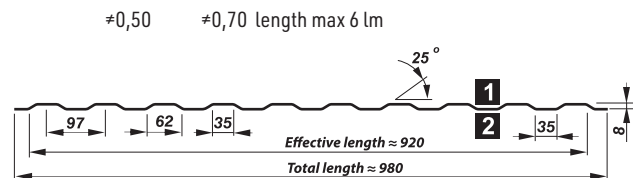
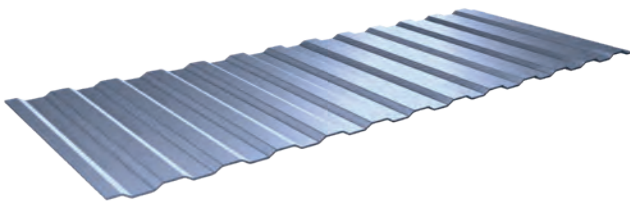
COATING	STEEL SHEET THICKNESS
zinc	0,50 mm to 0,70 mm
200, 275 $\text{g/m}^2$	

### T 7 elevation

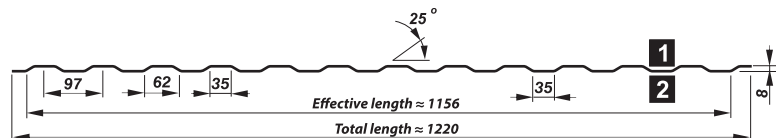


COATING					STEEL SHEET THICKNESS
polyester	hybrid	polyurethane	zinc	aluzinc	0,50 mm to 0,70 mm
glossy					
25 $\mu\text{m}$	40 $\mu\text{m}$	50 $\mu\text{m}$	200, 275 $\text{g/m}^2$	150, 185 $\text{g/m}^2$	

### T 8 elevation



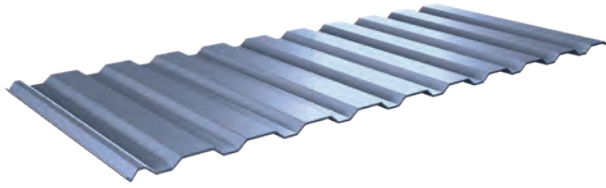
COATING:	STEEL SHEET THICKNESS
zinc	0,50 mm to 0,70 mm
200, 275 $\text{g/m}^2$	



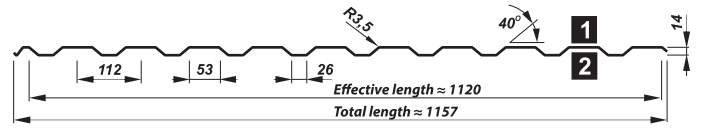
COATING					STEEL SHEET THICKNESS
polyester	hybrid	polyurethane	zinc	aluzinc	0,50 mm to 0,70 mm
glossy					
25 $\mu\text{m}$	40 $\mu\text{m}$	50 $\mu\text{m}$	200, 275 $\text{g/m}^2$	150, 185 $\text{g/m}^2$	

# TRAPEZOIDAL PROFILES

## T 14 elevation

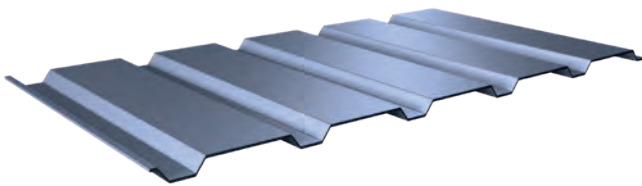


≠0,50 length max 6 lm ≠0,70 length max 7 lm

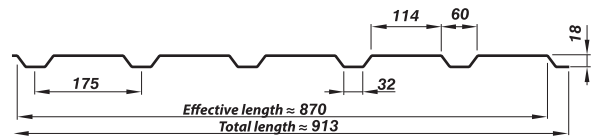


COATING					STEEL SHEET THICKNESS
polyester		hybrid	polyurethane	zinc	0,50 mm to 0,70 mm
glossy	25 µm		50 µm	200, 275 g/m <sup>2</sup>	
	35 µm			150, 185 g/m <sup>2</sup>	

## T 18 galvanised - elevation

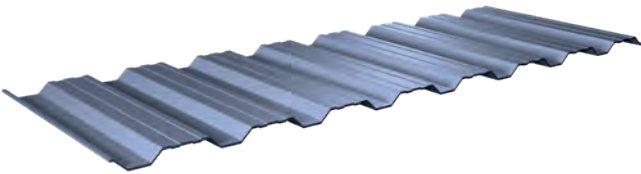


≠0,50 length max 7 lm ≥0,60 length max 8 lm

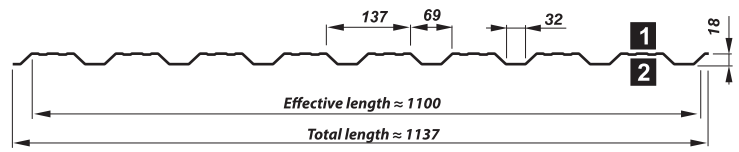


COATING		STEEL SHEET THICKNESS
zinc		0,50 mm to 0,80 mm
200, 275 g/m <sup>2</sup>		

## T 18 DR elevation

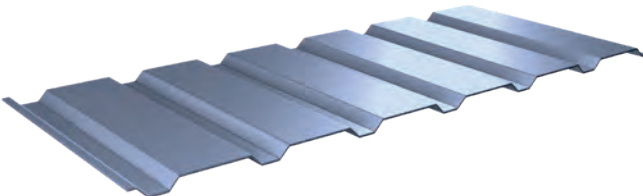


≠0,50 to 0,70 length max 9 lm

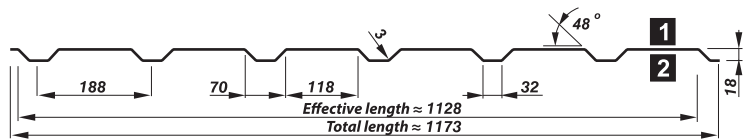


COATING					STEEL SHEET THICKNESS
polyester		hybrid	polyurethane	zinc	0,50 mm to 0,70 mm
glossy	25 µm		50 µm	200, 275 g/m <sup>2</sup>	
	35 µm			150, 185 g/m <sup>2</sup>	

## T 18 elevation

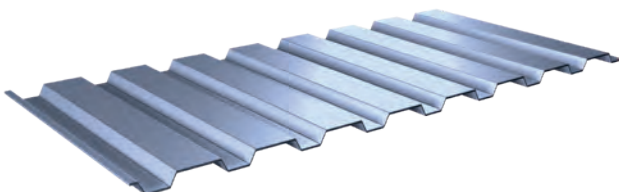


≠0,50 to 0,75 length max 9 lm

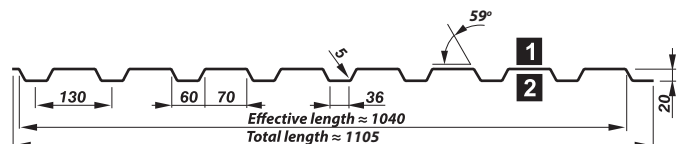


COATING					STEEL SHEET THICKNESS
polyester		hybrid	polyurethane	zinc	0,50 mm to 0,75 mm
glossy	25 µm		50 µm	200, 275 g/m <sup>2</sup>	
	35 µm			150, 185 g/m <sup>2</sup>	

## T 20 elevation



≠0,50 to 0,75 length max 9 lm

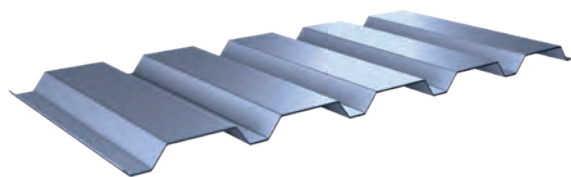


COATING					STEEL SHEET THICKNESS
polyester		hybrid	polyurethane	aluzinc	0,50 mm to 0,75 mm
glossy	25 µm		50 µm	150, 185 g/m <sup>2</sup>	
	35 µm				

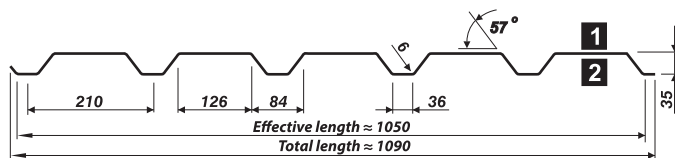


# TRAPEZOIDAL PROFILES

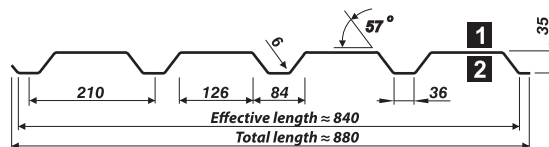
## T 35E elevation



≠0,50 length max 9 lm ≥0,70 length max 12 lm

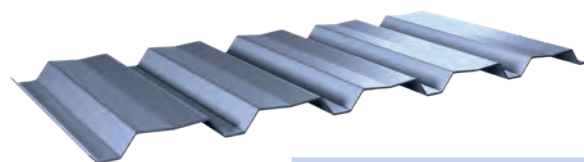


COATING:					STEEL SHEET THICKNESS	
polyester		hybrid	polyurethane	zinc	aluzinc	0,50 mm to 1,00 mm
glossy	matt			200, 275 g/m <sup>2</sup>	150, 185 g/m <sup>2</sup>	
25 μm	35 μm	40 μm	50 μm			

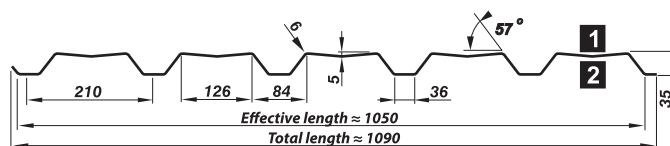


COATING:	STEEL SHEET THICKNESS
zinc	0,50 mm to 1,00 mm
200, 275 g/m <sup>2</sup>	

## T 35EL elevation

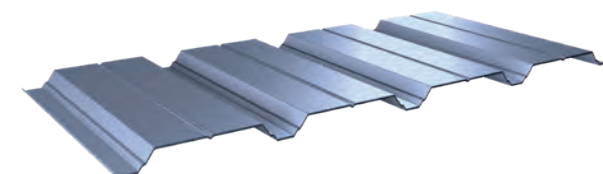


≠0,50 length max 9 lm ≥0,70 length max 12 lm

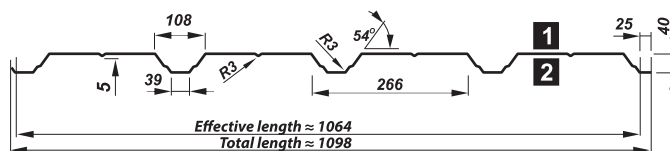


COATING					STEEL SHEET THICKNESS	
polyester		hybrid	polyurethane	zinc	aluzinc	0,50 mm to 1,00 mm
glossy	matt			200, 275 g/m <sup>2</sup>	150, 185 g/m <sup>2</sup>	
25 μm	35 μm	40 μm	50 μm			

## T 40 elevation

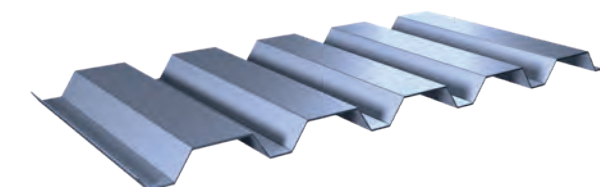


≠0,50 length max 9 lm ≥0,70 length max 12 lm

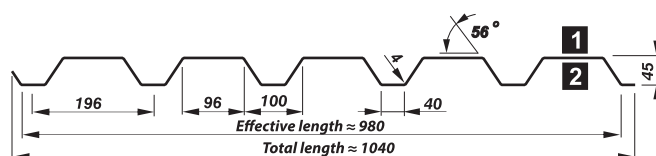


COATING:					STEEL SHEET THICKNESS	
polyester		hybrid	polyurethane	zinc	aluzinc	0,50 mm to 1,0 mm
glossy	matt			200, 275 g/m <sup>2</sup>	150, 185 g/m <sup>2</sup>	
25 μm	35 μm	40 μm	50 μm			

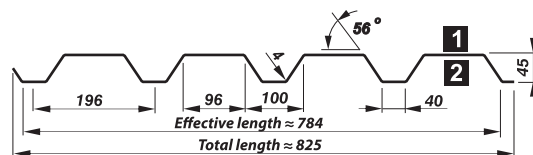
## T 45 elevation



≠0,50 długość max 9 mb ≥0,70 długość max 12 mb



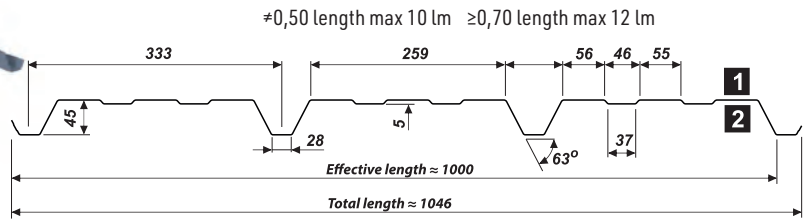
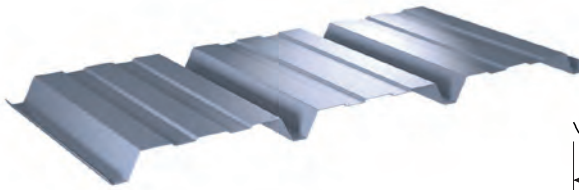
COATING:					STEEL SHEET THICKNESS	
polyester		hybrid	polyurethane	zinc	aluzinc	0,50 mm to 1,0 mm
glossy	matt			200, 275 g/m <sup>2</sup>	150, 185 g/m <sup>2</sup>	
25 μm	35 μm	40 μm	50 μm			



COATING:	STEEL SHEET THICKNESS
zinc	0,50 mm to 1,0 mm
200, 275 g/m <sup>2</sup>	

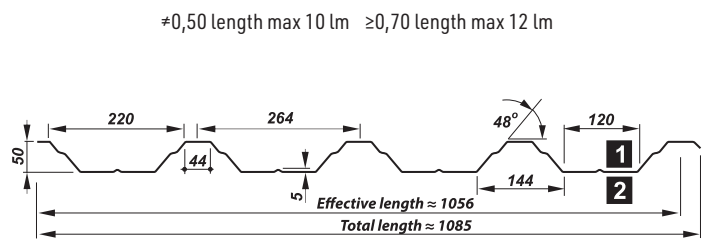
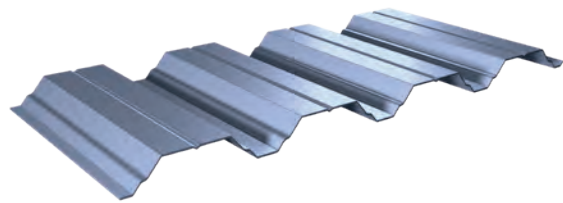
# TRAPEZOIDAL PROFILES

## T 45P elevation



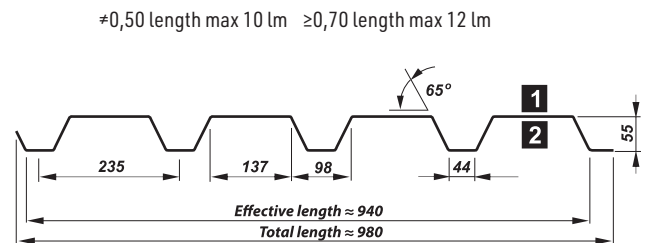
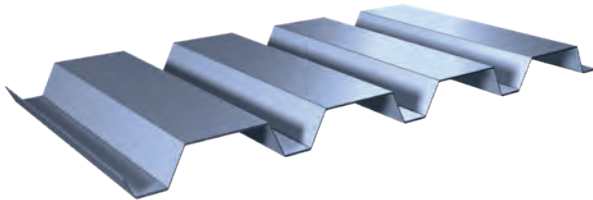
COATING					STEEL SHEET THICKNESS	
polyester		hybrid	polyurethane	zinc	aluzinc	0,50 mm to 1,00 mm
glossy	matt					
25 µm	35 µm	40 µm	50 µm	200, 275 g/m <sup>2</sup>	150, 185 g/m <sup>2</sup>	

## T 50P elevation



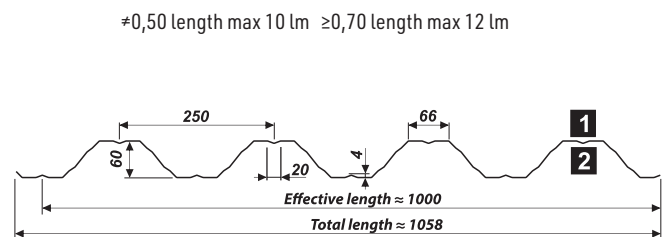
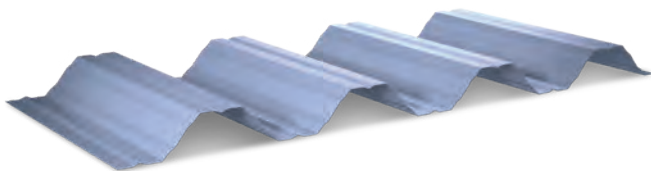
COATING					STEEL SHEET THICKNESS	
polyester		hybrid	polyurethane	zinc	aluzinc	0,50 mm to 1,25 mm
glossy	matt					
25 µm	35 µm	40 µm	50 µm	200, 275 g/m <sup>2</sup>	150, 185 g/m <sup>2</sup>	

## T 55P elevation



COATING					STEEL SHEET THICKNESS	
polyester		hybrid	polyurethane	zinc	aluzinc	0,50 mm to 1,25 mm
glossy	matt					
25 µm	35 µm	40 µm	50 µm	200, 275 g/m <sup>2</sup>	150, 185 g/m <sup>2</sup>	

## T 60P elevation



COATING					STEEL SHEET THICKNESS	
polyester		hybrid	polyurethane	zinc	aluzinc	0,50 mm to 1,25 mm
glossy	matt					
25 µm	35 µm	40 µm	50 µm	200, 275 g/m <sup>2</sup>	150, 185 g/m <sup>2</sup>	

ACOUSTIC VERSION OF TRAPEZOIDAL SHEETS IS MANUFACTURED WITH PERFORATION

## COLORS

### POLYESTER COVERINGS

#### glossy PS 25 µm

RAL 9010 <sup>(1)(2)(3)</sup> SNOWY WHITE	RAL 9002 <sup>(1)(2)</sup> WHITE	RAL 7035 <sup>(1)(2)</sup> GREY	RAL 9006 <sup>(1)(2)(3)</sup> SILVER	RAL 9007 <sup>(1)(2)</sup> SILVER METALLIC	RAL 7000 <sup>(1)</sup> GREY
RAL 7024 <sup>(1)</sup> GRAPHITE	RAL 7016 <sup>(1)(2)</sup> ANTHRACITE	RAL 5010 <sup>(1)(2)</sup> BLUE	RAL 6029 <sup>(1)(2)</sup> GREEN	RAL 6005 <sup>(1)</sup> DARK GREEN	RAL 1021 <sup>(1)</sup> YELLOW
RAL 1002 <sup>(1)(2)</sup> SAND	RAL 8023 <sup>(1)</sup> COPPER	RAL 8004 <sup>(1)</sup> BRICK	RAL 3016 <sup>(1)(2)</sup> CORAL	RAL 3005 <sup>(1)</sup> DARK CHERRY	RR 028 <sup>(1)</sup> CHERRY
RAL 3011 <sup>(2)</sup> LIGHT CHERRY	RAL 8017 <sup>(1)(2)</sup> BROWN	RR 032 <sup>(1)</sup> DARK BROWN	RAL 9005 <sup>(1)</sup> BLACK	<sup>(1)</sup> GOLDEN OAK	RAL 1015 <sup>(1)</sup> CREAM - BEIGE

**10/30** Guarantee\*  
for years

The 25 µm layer of polyester varnish is an efficient protection against the destructive impact of UV radiation. The coating protects the steel against corrosion and ensures colour durability for years. Products with glossy polyester (PS) coating are granted even 30-year warranty.

#### PMG 35 µm coarse matt

RR 011 <sup>(1)</sup> GREEN	RR 750 <sup>(1)</sup> BRICK	RR 028 <sup>(1)</sup> CHERRY	RR 032 <sup>(1)</sup> DARK BROWN	RAL 8017 <sup>(1)</sup> BROWN	RAL 7016 <sup>(1)</sup> ANTHRACITE
RR 033 <sup>(1)</sup> BLACK	<sup>(1)</sup> DARK WALNUT				

**15/35** Guarantee\*  
for years

The coarse-grained PMG polyester coating is 35 µm of efficient protection against external factors. Used primarily for cut-to-size steel roof tiles, it creates a modern, matt finish for the building.

#### TOPMAT

RR 750 <sup>(1)</sup> BRICK	RAL 8017 <sup>(1)</sup> BROWN	RAL 7016 <sup>(1)</sup> ANTHRACITE	RR 033 <sup>(1)</sup> BLACK
--------------------------------	----------------------------------	---------------------------------------	--------------------------------

**20/35** Guarantee\*  
for years

TOPMAT® is a 35 µm thick matt polyester surface. It has 20% higher resistance to discoloration and higher corrosion resistance than glossy polyester coating. It's designed for panel roof tiles.

### HYBRID COATINGS

#### PURMAX POWŁOKA HYBRYDOWA

RAL 8004 <sup>(1)</sup> BRICK	RAL 8017 <sup>(1)</sup> BROWN	RAL 9005 <sup>(1)</sup> BLACK	RAL 7016 <sup>(1)</sup> ANTHRACITE
----------------------------------	----------------------------------	----------------------------------	---------------------------------------

**20/40** Guarantee\*  
for years

This coating is a combination of 25 µm polyester and 15 µm thick polyurethane. It is characterized by a very high resistance to mechanical damage thanks to innovative methods of hardening varnishes with the use of UV radiation.

### POLYURETHANE COVERINGS

#### PURLAK

RAL 8004 <sup>(1)</sup> BRICK	RR 028 <sup>(1)</sup> CHERRY
RAL 9005 <sup>(1)</sup> BLACK	RAL 7016 <sup>(1)</sup> ANTHRACITE

#### PURMAT

RAL 8017 <sup>(1)</sup> BROWN	RR 750 <sup>(1)</sup> BRICK	RR 011 <sup>(1)</sup> GREEN	RR 028 <sup>(1)</sup> CHERRY
RAL 8017 <sup>(1)</sup> BROWN	RR 033 <sup>(1)</sup> BLACK	RAL 7016 <sup>(1)</sup> ANTHRACITE	

**30/50** Guarantee\*  
for years

The polyurethane coverings PURLAK (gloss) and PURMAT (matt) are a 50-micron layer which effectively protects the cover against the harmful effects of sunlight. The risk of corrosion has been minimized, so that the coating can be used even in areas with a high degree of environmental aggressiveness.

(1) steel sheet thickness 0.5 mm, (2) steel sheet thickness 0.7 mm, (3) steel sheet thickness 1.0 mm,

Actual colours may vary from displayed or printed images. The shades of the coatings may vary depending on the steel coil from the product is made of.

If the customer requires a specific shade of coating color, please inform the sales person when placing the order.

\*The length of the guarantee depends on the type of guarantee (aesthetic or technical). Check the conditions on the website [pruszynski.com.pl](http://pruszynski.com.pl) or ask at the point of sale.